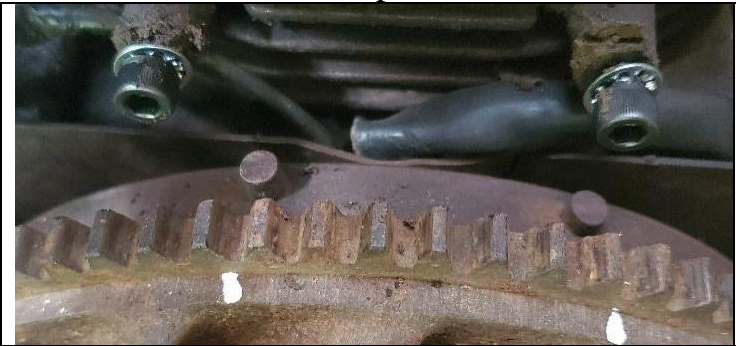


CCTI 12V Ignition Installation instructions

Replaces 610748/610855/610906 OEM CDI Systems



Install (2) 1/4-20 socket head fasteners & star washers
Mark Long (TDC) & Short (ADV) pins for later use



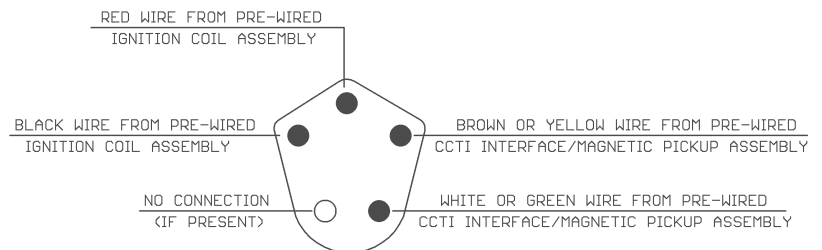
Mount CCTI Interface/Magnetic pickup & set the gap between the Magnetic Pickup & Long pin to 0.010"



Mount the coil & ECM within reach of their various connections. 12V via toggle switch is applied to the 1/4" female QC at back of coil.

4-PIN CRYSLER IGNITION MODULE

5-PIN CRYSLER IGNITION MODULE MAY BE USED -
ONLY MAKE THESE 4 CONNECTIONS



Female bullet QC connections made to ECM as defined above. Make certain that the leads will reach before mounting components. Toggle switch can be mounted anywhere as wires are cut to length.

- Wiring Diagram is on the reverse side of this page -

- 1) Disconnect the Negative terminal from the battery, then remove the blower housing
- 2) Verify that the trigger pins on the flywheel are in good shape – replace if not – distorted or beat up pins won't work
- 3) Remove the OEM coil assembly and install the (2) 1/4" socket head fasteners and internal star lock washers
- 4) Mark the relative positions of the long (TDC) and short (ADVANCE) trigger pins for potential later use
- 5) Mount the CCTI Interface/Magnetic pickup, setting the gap between the long pin and the magnetic pick-up to 0.010"
- 6) Route the associated bonded wires through the original spark plug opening in the blower housing using the grommet
- 7) Mount the Ignition Coil & ECM away from heat & vibration within reach of the spark plug and the other required connections
- 8) Mate the 4 bullet female quick-connects from the CCTI Interface/Magnetic pickup & Ignition coil to the ECM
- 9) Install the LED toggle switch where convenient. Ground the QC tab for LED operation – wire & terminals are not included
- 10) Connect the load side of the switch to the QC tab at the back end of the Ignition Coil - wire & terminals are not included
- 11) Connect the source side of the switch to the positive side of the battery – fuse if desired – wire, terminals & fuse are not included
- 12) Using cable ties or other means to secure all wires associated with the various components
- 13) Reconnect the Negative battery terminal – Start the engine and verify proper performance

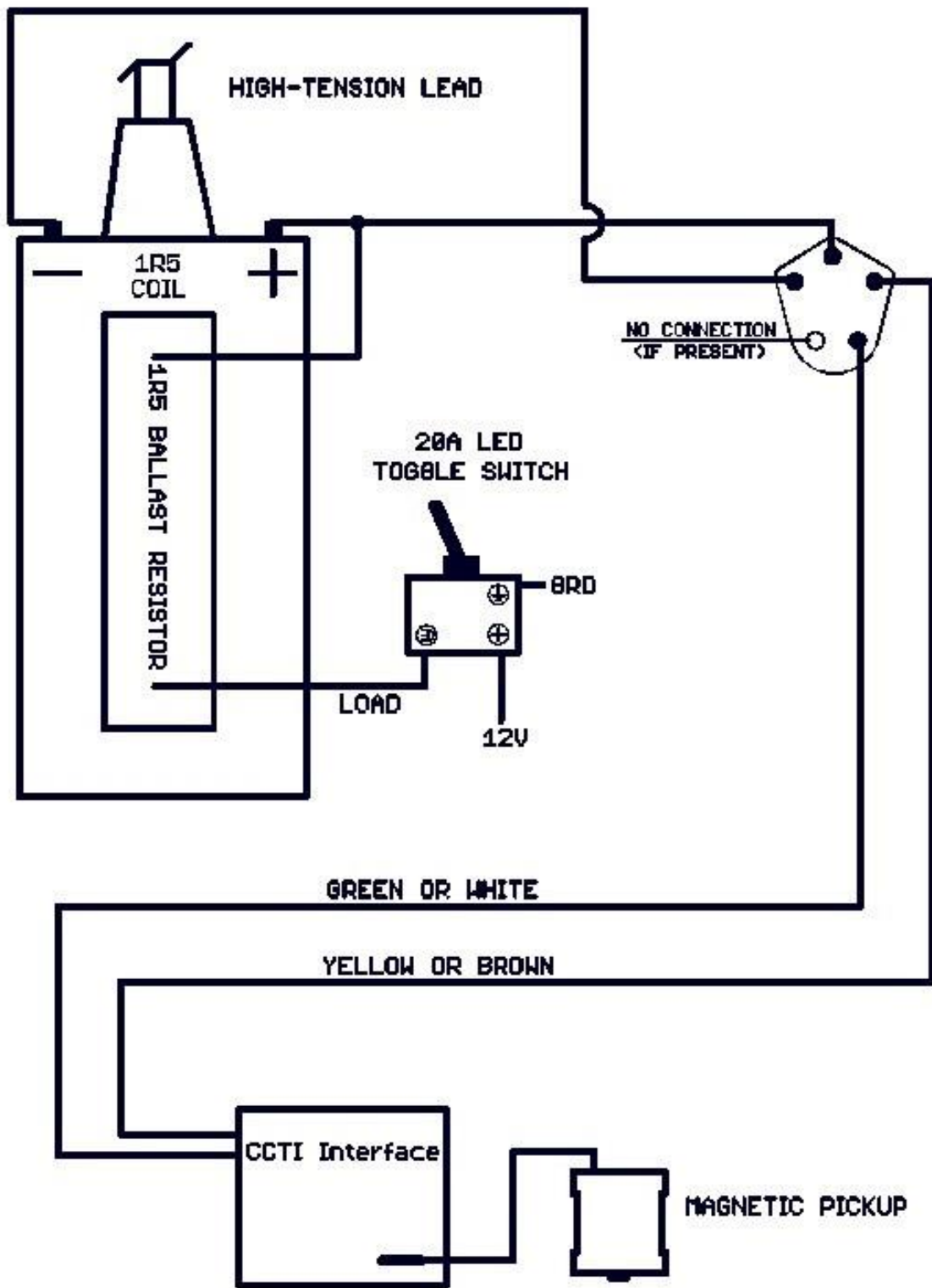
If the engine fails to develop power, the marked trigger pins may be used to verify proper timing if needed. Take this step ONLY after considering other issues such as carburetion or other related fuel issues, valve adjustment, etc.

Overnight Solutions LLC

PO Box 3004 • Merton, WI 53056-3004 • dale_colvert@yahoo.com • Phone 262.391.6670 • Issued 4/3/22
Overnight Solutions is responsible for potential product replacement only, and is not liable for any misuse

CCTI WIRING DIAGRAM

Overnight Solutions LLC



Overnight Solutions LLC

PO Box 3004 • Merton, WI 53056-3004 • dale_colvert@yahoo.com • Phone 262.391.6670 • Issued 4/3/22
Overnight Solutions is responsible for potential product replacement only, and is not liable for any misuse